


HYUNDAI ELEVATOR CO., LTD.

This publication is for general informational purposes only and the company reserves the right to alter product design and specifications at any time.

Notes

1. Product images have been created to help viewers' understanding. Design and colors depicted may differ from the actual products'.
2. Copyright © HYUNDAI ELEVATOR CO., LTD. All rights reserved.
3.  Please recycle this brochure to protect the environment.

Website



YouTube



TOTAL SOLUTIONS FOR CRUISE



WHY HYUNDAI ELEVATOR?



As it is more important for everything to operate perfectly when out at sea, we make it a rule to provide products that ensure the efficient and safe transportation of both people and cargo onboard as a reliable partner.

Total Moving Solution Provider

Hyundai Elevator is a transportation equipment supplier that offers comprehensive service from the design of elevators, escalators, and moving walkways to their manufacturing, installation and maintenance. We were founded in 1984 and have been retaining the largest market share in Korea over the past 15 years. Our technological process and expertise are globally recognized and have elevated us to new heights. We have been supplying elevators and escalators for large vessels (oil tankers, bulk/ore carrier, container ships, offshore plants, and passenger ships) since 1986. Our products have an impeccable reputation among major classification societies such as DNV to LR, ABS, BV, KR, and CCS.



No.1



- Ranked 1st in market share in the Korean elevator market for 15 consecutive years
- Ranked 1st in market share in the world marine elevator market
- Equipped with high-caliber installation and design experts

All in One



Lead time minimized by establishing an enterprise-wide system dealing with in-house designing, purchasing, manufacturing, and quality control.

Global Network



Maintenance service promptly provided at major ports around the world through our global service network.

Eco-friendly

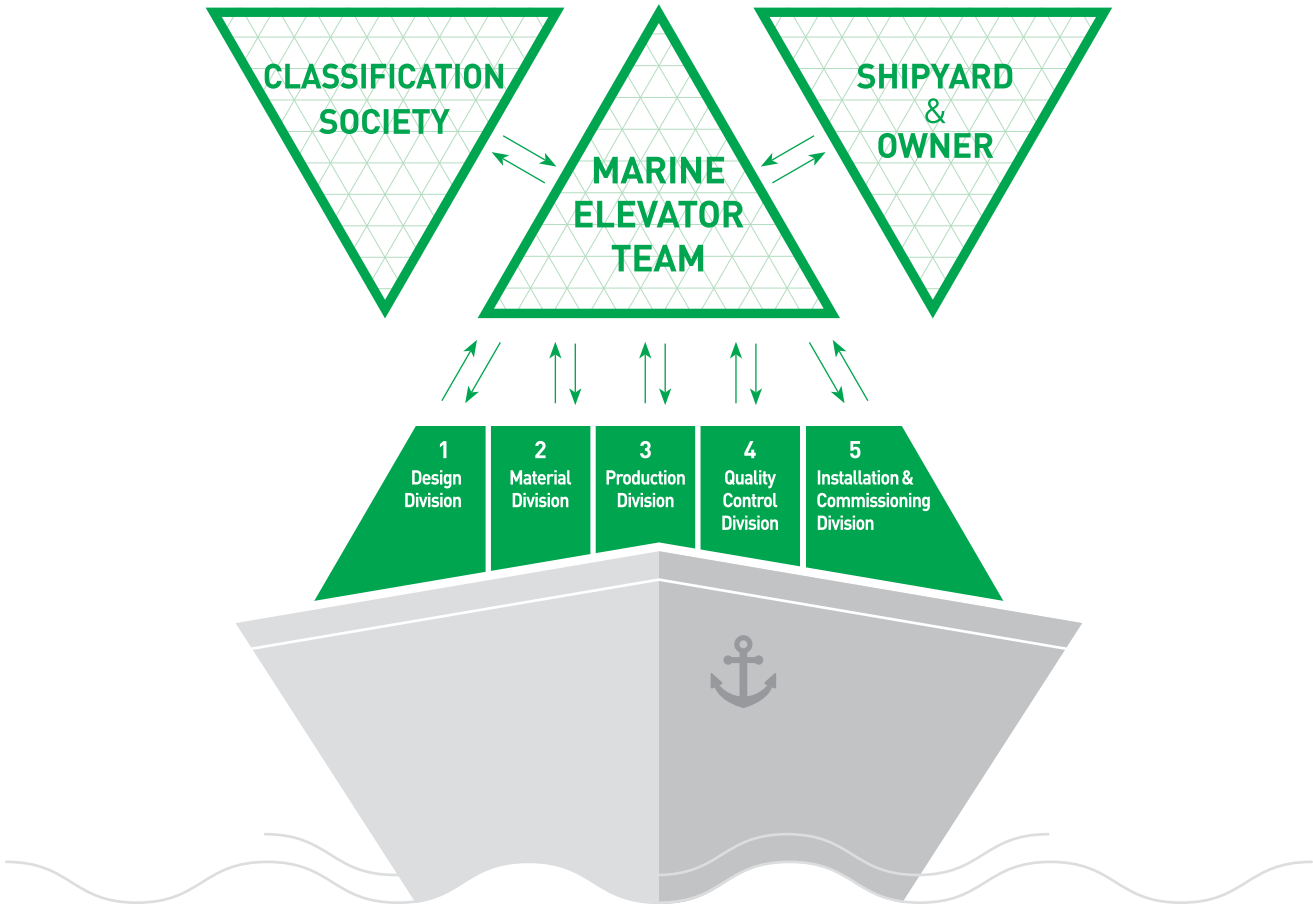


Eco-friendly and efficient management achieved as evidenced by reaching Class A on the energy efficiency scale (certification of Germany's TÜV SÜD attained).

OUR EXPERTS SPECIALIZING IN CRUISE SHIP ELEVATORS

Professional Team

We operate a team of experts specializing in cruise ship elevators.
The team offers elevator design options optimized for each customer.



1. Design Division

The Design Division takes charge of all designs from basic designs to production designs based on consistent standards and reflects the needs of shipowners and shipyards in each step.

2. Material Division

The Material Division procures and delivers the quality materials required by each design in a timely manner.

3. Production Division

The Production Division creates the best quality products in a safe, secure workplace.

4. Quality Control Division

The Quality Control Division assesses each product and controls quality based on international standards and the rules of classification societies.

5. Installation & Commissioning Division

The Installation & Commissioning Division conducts the installation and inspection of installed products at shipyards and promptly responds to the requests of shipowners, shipyards, and classification societies.

Solutions for Cruise Ships

Total Solutions



We provide total transportation solutions, from elevators to escalators, for cruise ships. We offer a wide range of products for different purposes and ship types.



1. Passenger Elevator

Elevators for accommodating passengers are focused on ensuring ride comfort and creating an ambience that matches the luxurious interior of a cruise ship. Different options and features can also be selected to cater to the individual needs of customers (group car control, destination selection, information screen, etc.).



2. Panoramic/Scenic Elevator

Car walls are installed with transparent safety windows so that passengers can enjoy a panoramic view from the elevator. All windows employ condensation-prevention double-glazed glass for safety and easy maintenance.



3. Service Elevator

Large service elevators for transporting luggage, goods and foods are designed to comply with the standards of the United States Public Health Service (USPHS) and to guarantee durability and safety.



4. Passenger Escalator

Our escalators that help people conveniently move around cruise ships are designed to comply with EN115, the EU guidelines in assessing the safety of escalators. Different features can be selected to ensure efficient maintenance and energy saving.

An innovative, eco-friendly system that efficiently manages the transportation of elevator passengers in ships.

A Cutting-Edge System for Passenger Elevators



Conventional Group System

A conventional group system controls multiple elevators using pre-configurations that promote the efficient operation of individual elevators. When a call button is pressed, it dispatches the elevator that can reach a floor the fastest to reduce waiting times.



Destination Selection System (DSS)

A destination selection system requires passengers to enter their destination floors before boarding an elevator to calculate waiting times, travel times, and the number of passengers. It dispatches the elevators optimally to minimize travel times and maximize energy efficiency. Compared to conventional systems, it can reduce passenger waiting times by up to 24% and boarding times by up to 40%. Ride comfort is also improved because elevators are less crowded.



Information Display System

Display systems are the fastest and easiest means to relay to passengers information related to the elevators and ship. They can be installed inside elevators, next to escalators, and in lobbies and platforms to convey elevator information as well as announcements, news, advertisements, and the weather.



CRUISE ELEVATORS

COMFORT

Ride comfort at sea ensured by minimizing vibrations

EFFICIENCY

Eco-friendly technology maximizing energy efficiency

PROVEN DESIGN

Luxurious interior designs ideal for cruise ships

24/7 CARE

Remote management possible 24 hours a day for more convenient and efficient maintenance

SAFETY AND CERTIFICATIONS

- ISO 9001 Certification
- ISO 14001 Certification
- Approved for CE Making in Gearless TM
- Full compilaion with EN81

Technology

Experience our cutting-edge technology that ensures efficient and reliable people-moving service out at sea.

High-Efficiency Gearless Synchronous Traction Machine



Maximum Ride Comfort

The key to the production of vessel elevators is the technology to minimize vibrations transmitted from the body of the ship. Our gearless synchronous traction machine ensures smoother ride quality by dramatically reducing noise and vibration. In addition, the vibration-proof traction machine base works to prevent even the smallest vibrations.

Energy Saving

Our gearless synchronous traction machine employs the synchronous traction motor using a permanent magnet, thereby reducing energy consumption by 25% compared to an induction motor.

* Energy savings and efficiency figures may vary depending on the actual environment.

Eco-friendly Technology and Convenient Maintenance

Our gearless synchronous traction machine is eco-friendly as it does not require any gear oil. It adds to convenience in maintenance and reduction of management costs.



Rated Class A on Germany's Elevator Energy Efficiency Scale

Our major products were rated Class A (the highest rating) by TÜV SÜD, a certification provider of Germany, on the energy efficiency scale set by Verein Deutscher Ingenieure (VDI), the largest engineering association in Western Europe.

VDI 4707 Part1

VDI 4707 Part1 is a set of guidelines for the assessment and rating of elevators. International certification is provided by taking into consideration capacity, speed, interval, energy consumption in service, and average distance in service. Elevators are rated in terms of a set of seven energy efficiency classes from A (most efficient) to G (least efficient).

Power Regenerative Inverter System That Reuses Energy



Up to 60% Energy Saved

Energy generated from the operation of elevators is re-used to minimize energy consumption and save up to 60% of energy when elevators are in service (energy efficiency improved by 77.5%).

* Energy savings and efficiency figures may vary depending on the actual environment.

Heating Value of the Machine Room Decreased

Energy generated from the operation of elevators is converted into renewable energy instead of heat, and thus the heating value of the machine room is dramatically decreased.



Remote Monitoring and Control System (RMCS)



The remote elevator control panel is equipped with a terminal that collects operation data, so that maintenance personnel on board can communicate in real time 24 hours a day via TCP/IP (LAN). Elevator operation can be monitored remotely. It is also the first system in the industry to directly operate and control the elevator.



Portfolio

A wide range of cruise lines has shown full satisfaction with our advanced quality and services. Add greater value to your cruise line with our state-of-the-art technology.



AIDA Prima / AIDA Perla

SHIP FACTS

Type: Hyperion Class
Tonnage: 125,572 GT
Length: 299.95 m
Breath: 37.65 m
Draught: 8.25 m
Deck: 18
Speed: 22 Knots
Passenger: 3,300
Crew: 900
Delivery: 2016 / 2017

ELEVATOR FACTS

Passenger: 18 units
Service: 15 units
Total: 33 units



	SHIP FACTS										
	Type	Tonnage	Length	Breath	Draught	Deck	Speed	Passenger	Cargo	Lane Meter	Delivery
1. New Golden Bridge	Passenger Ferry	27,000 GT	190 m	37.65 m	8.25 m	11	23 Knots	750	290 TEU	-	2000
2. Norman Leader	RoRo Passenger Ferry	27,000 GT	162 m	25.6 m	5.8 m	-	21 Knots	1,215	-	1,500	2010
3. STENA Transporter / STENA Transit	RoRo Passenger Ferry	33,690 GT	212 m	26 m	6.3 m	-	22 Knots	300	-	4,056	2011
4. Panstar Dream	RoRo Passenger Ferry	21,680 GT	160 m	27 m	6 m	-	22 Knots	545	220 TEU	-	1997
5. Queen Jenuvia	170M Class Ro-Pax	27,391 GT	170 m	26 m	6.5 m	-	24 Knots	1,284	-	1,680	2020
6. Aura-Seaway	4,500LM Ro-Pax	56,043 GT	230 m	31.6 m	7 m	-	23 Knots	690	-	4,500	2021
7. Luna Seaway	4,500LM Ro-Pax	56,043 GT	230 m	31.6 m	7 m	-	23 Knots	690	-	4,500	2022
8. Beyond Trust	170M Class Ro-Pax	26,546 GT	170 m	26 m	6.5 m	-	22 Knots	854	-	1,680	2021



Global Service Network

We provide pinpoint, speedy services whenever necessary.
Our global network enables prompt and effective responses to any request for maintenance at major ports around the globe.

EUROPE

U.A.E

RUSSIA

KOREA

CHINA

SINGAPORE

JAPAN

U.S.A.

PANAMA

KOREA

HYUNDAI ELEVATOR CO., LTD. (HEAD OFFICE)

P.I.C. : MR. Y. S. PARK & MR. I. KIM

TEL. : +82 2 3670 0868 / 1281

FAX. : +82 2 3672 8763 / 8764

E-MAIL : ys.park@hyundaelevator.com /
in.kim@hyundaelevator.com

OCEAN ELEVATOR

P.I.C. : MR. KEVIN MOON

TEL. : +82 2 2617 0643

FAX. : +82 2 2619 5881

E-MAIL : ocean@ocean-elevator.com /
kymoon@ocean-elevator.com /
jnkim@ocean-elevator.com

CHINA

SHANGHAI-HYUNDAI ELEVATOR CO., LTD.

P.I.C. : MR. STEVEN KIM

TEL. : +86 21 5435 6195 / +86 186 2173 6960

E-MAIL : jinl0573@hdel.com.cn /
hyundai_sh@yeah.net

**HD-GLOBAL (HK) ENGINEERING SERVICES LTD.
- HONGKONG & CHINA**

P.I.C. : MR. S. C. KIM

TEL. : +852 6325 9038 (HONG KONG)

+86 755 6138 8980 (CHINA) /

+86 188 2585 5903 (CHINA) /

FAX. : +86 755 2585 5496 (CHINA)

E-MAIL : hyundaisz@naver.com /
hyundaisz2015@vip.163.com /
hyundai_global@yahoo.com

SHANGHAI DONGHYUN ENGINEERING CO., LTD

P.I.C. : MS. SARA ZHU

TEL. : +86 21 64838977

E-mail. : donghyun_space@163.com

JAPAN

NIPPON LIFTS ENGINEERING INC.

P.I.C. : MR. DAISUKE ITOH

TEL. : +81 45 478 1790

FAX. : +81 45 478 1792

E-MAIL : daisuke.itoh@nle-jpn.co.jp /
marine@nle-jpn.co.jp

SINGAPORE

HANKOOK ENGINEERING PTE LTD.

P.I.C. : MR. Daniel KIM & MR. Y. X. LI

TEL. : +65 6295 4787

E-MAIL : hkengr@singnet.com.sg

U.S.A.

DELAWARE ELEVATOR INC.

P.I.C. : MR. ED GRAFF

TEL. : +1 410 749 3489(EXT.1052)

E-MAIL : edgraff@delawareelevator.com

RUSSIA

COMPLEX SERVICE ENGINEERING LLC.

P.I.C. : MR. SERGEY YAKIMENKO

TEL. : +7 499 110 13 35

E-MAIL : info@cs-engr.ru

EUROPE

BELGIUM, SPAIN

INES MARINE

P.I.C. : MR. ROBERT TILLEY & YANNICK TILLEY

TEL. : +32 52 408 300

E-MAIL : service@lines-europe.com

CROATIA, ITALY & MALTA

PETRC ELEVATOR

P.I.C. : MR. DAVID PETRC

TEL. : +385 51 641 190

FAX. : +385 51 643 406

E-MAIL : david.petr@petrc-elevator.hr

U.A.E.

ARABIAN ELEVATOR & ENGINEERING CO. LLC.

P.I.C. : MR. IZHAR ALI

TEL. : +971 6 5739920

E-MAIL : aeec@emirates.net.ae

PANAMA

TALLERS INDUSTRIALES, S.A.

P.I.C. : MR. LINO AROSEMENA

TEL. : +507 6090 0041

E-MAIL : talleres@talleresindustriales.com /
lino@talleresindustriales.com