



MARINE
MRL ELEVATORS
Machine-Room-Less


HYUNDAI
ELEVATOR CO., LTD.

HYUNDAI MARINE ELEVATORS

Occupying the largest share in the world marine elevators market, Hyundai Elevator provides tailored solutions through its world-class technology and experience.

Our solutions are ideal for harsh marine environments and come with full legal compliance. In addition, we have a wide range of world-class technologies in compliance with the requirements from world major Classifications including ABS, DNVGL, LR, BV, RS, KR, RINA and CCS.

WHY HYUNDAI MARINE ELEVATOR?



NO. 1

- Ranked 1st in market share in the Korean elevator market for 13 consecutive years. (As of the end of December, 19)
- Ranked 1st in market share in the global marine elevator market.

We have 76% market share in Korean shipyards, the largest ship market, and 65% in Chinese shipyards. (As of the end of July, 20)



ALL IN ONE

It is thoroughly managed with an all-in-one system that is responsible for design, purchase, manufacturing and quality control in Korea. In particular, it maintains optimal performance of equipment even in a marine environment that has undergone strict self-quality certification tests of major safety parts directly connected to customer safety.



GLOBAL NETWORK

Maintenance service promptly provided at major ports around the world through our global service network.

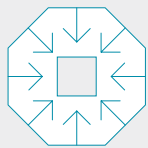


REFERENCES

We have successfully delivered vertical transport solutions for a variety of cargo-vessel projects around the world. Below is a selection of our most recent references.

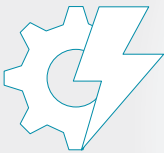
Vessel type	Hull No.	Shipyard	Owner
Container	DSME-H4302~12	Daewoo Shipbuilding & Marine Engineering	Maersk Line
RoPax	GSI-18121009/10	Guangzhou Shipyard International	DFDS
Shuttle tanker	HHI-H3114/15	Hyundai Heavy Industries	KNOT
LNG carrier	HHI-H3185~88 / HSHI-T8091~94	Hyundai Heavy Industries / Hyundai Samho Heavy Industries	JP Morgan, Korealine

MACHINE ROOM LESS



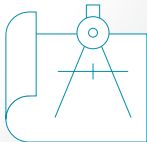
COMPACT

- Less Size/Weight
- Less Machine Room



EFFICIENCY

- Less Maintenance
- High Energy Efficiency



PROVEN DESIGN

- More than 100 Units of Reference/ Ongoing Projects with Classification Approval





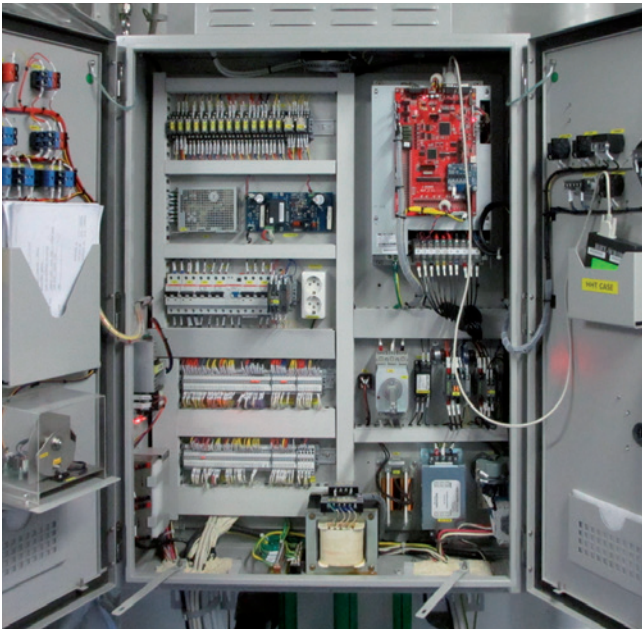
DESIGNED FOR BEST PERFORMANCE

Hyundai elevator's all components comply with relevant Rules and Regulations, and are designed and manufactured to withstand the harsh environment condition at sea.



EFFICIENT GEARLESS MACHINE

- Synchronous Traction Machine
- High Efficiency
- Compact Design
- Space Saving
- IP44
- Low Noise and Vibration



ADVANCED CONTROL SYSTEM

- 140 Subdivided Error Codes For Easy & Quick Action
- Compact Size Control Panel
- Remote Trip/Reset Operation of Overspeed Governors at Control Panel
- Easy Maintenance by Hand Held Terminal



SOLUTION TO MAINTAIN THE BEST SHIP

Hyundai elevator's lifecycle approach can also be seen in our world-class global maintenance service, which keeps your elevators working reliably for its entire operational lifespan.



MAINTANACE

- Global Service Availability by Official Service Agents at Major Ports around the World
- Quick and Precise Response via HQ Technical Supports
- Professional Engineers by HQ Training Program
- Long Term Spare Parts Availability



SAFETY AND CERTIFICATIONS

- ISO 9001 Certification
- ISO 14001 Certification
- Approved for CE Marking in Gearless TM
- Full Compliance with EN81
- Full Compliance with Classification Society (ABS, DNVGL, LR, BV, RS, KR, RINA, CCS, Etc.)



ISO9001



ISO14001



CE

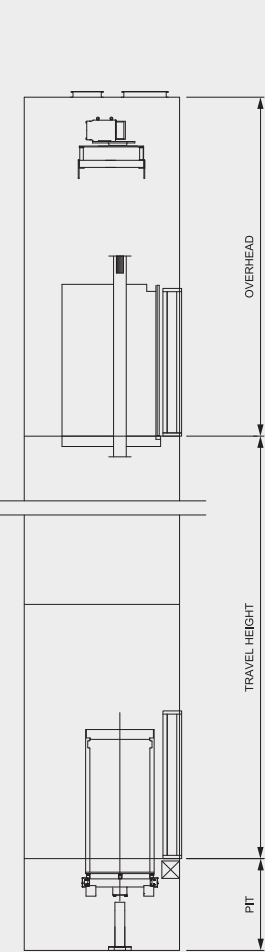
LAYOUT & DIMENSIONS

MRL STANDARD DIMENSIONS

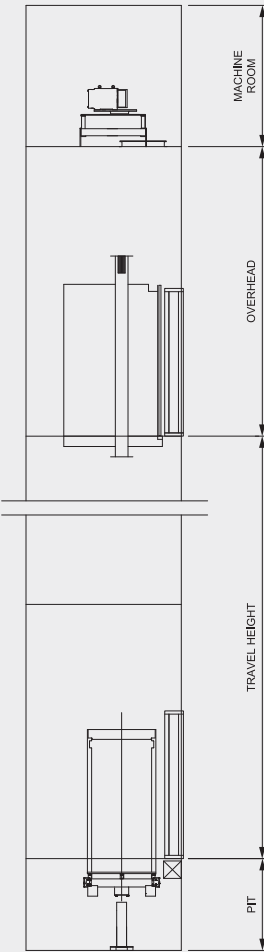
Load Capacity (Persons)	Speed (m/min)	Car Internal CW x CD(mm)	Trunk Dimension ¹⁾		
			A x B(mm)	Pit Height (mm)	Overhead Height (mm) ²⁾
500 kg (6 Persons)	45 60	950 x 1300	2200 x 2200	1300	4100
750 kg (10 Persons)	45 60	1100 x 1600	2400 x 2500	1300	4100
1000 kg (13 Persons)	45 60	1100 x 2100	2400 x 3000	1300	4100

MRL STANDARD LAYOUT

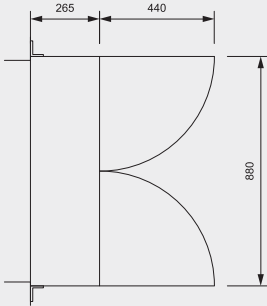
ELEVATION



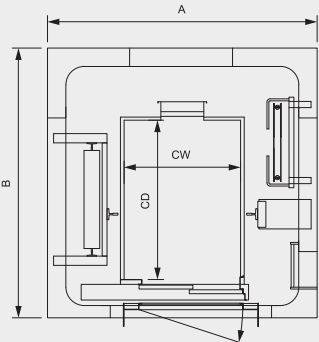
ELEVATION ⁴⁾



CONTROL PANEL ³⁾



PLAN



Notes :
1) Trunk dimensions may be changed according to actual dimensions of deck cutting (opening), stiffeners, insulations and etc.
2) Overhead height may be changed according to actual Rules/Regulations.
3) Elevator control panel can be arranged in other electrical equipment room.
4) Elevator machine room surrounded by steel boundaries shall be considered when the machinery for elevators are located within stairway enclosures according to the Section 2.2.5.2, Regulation 9, Ch. II-2 of SOLAS.

GLOBAL SERVICE NETWORK

We provide pinpoint, speedy services whenever necessary.
Our global network enables prompt and effective responses to any request
For maintenance at major ports around the globe.



KOREA

OCEAN ELEVATOR
P.I.C. : MR. KEVIN MOON
TEL. : +82 2 2617 0643
FAX. : +82 2 2619 5881
E-MAIL: ocean@ocean-elevator.com
kymoon@ocean-elevator.com
jnkim@ocean-elevator.com

JAPAN

NIPPON LIFTS ENGINEERING INC.
P.I.C. : MR. DAISUKE ITOH
TEL. : +81 45 478 1790
FAX. : +81 45 478 1792
E-MAIL: daisuke.ito@nle-jpn.co.jp
marine@nle-jpn.co.jp

SINGAPORE

HANKOOK ENGINEERING PTE LTD.
P.I.C. : MR. DANIEL KIM & MR. Y. X. LI
TEL. : +65 6295 4787
FAX. : +65 6295 4806
E-MAIL: hkengr@singnet.com.sg

CHINA

SHANGHAI-HYUNDAI ELEVATOR CO., LTD.
P.I.C. : MR. STEVEN KIM
TEL. : +86 21 5435 6195
+86 18621736960
E-MAIL: jin10573@hdel.com.cn
hyundai_sh@yeah.net

HD-GLOBAL (HK) ENGINEERING SERVICES LTD. – HONGKONG & CHINA
P.I.C. : MR. S. C. KIM
TEL. : +852 6325 9038 (HONGKONG)
+86 755 6138 8980 (CHINA)
+86 755 2585 5903 (CHINA)
FAX. : +86 755 2585 5496 (CHINA)
E-MAIL: hyundaisz@naver.com
hyundaisz2015@vip.163.com
hyundai_global@yahoo.com

SHANGHAI DONGHYUN ENGINEERING CO., LTD

P.I.C. : MS. SARA ZHU
TEL. : +86 21 64838977
E-MAIL: donghyun_spme@163.com

EUROPE

INES MARINE – BELGIUM & SPAIN
P.I.C. : MR. ROBERT TILLEY & YAN-NICK TILLEY
TEL. : +32 52 408 300
E-MAIL: service@ines-europe.com

PETRC ELEVATOR – CROATIA, ITALY & MALTA
P.I.C. : MR. DAVID PETRC
TEL. : +385 51 641 190 (CROATIA)
+356 2144 6726 (MALTA)
FAX. : +385 51 643 406 (CROATIA)
+356 2144 6928 (MALTA)
E-MAIL: david.petr@petrc-elevator.hr

U.A.E.

ARABIAN ELEVATOR & ENGINEERING CO. LLC.
P.I.C. : MR. IZHAR ALI
TEL. : +971 6 5739920
E-MAIL: aeec@emirates.net.ae

AMERICA

DELAWARE ELEVATOR INC. – USA
P.I.C. : MR. ED GRAFF
TEL. : +1 410 749 3489 (EXT.1052)
E-MAIL: edgraff@delawareelevator.com

HYUNDAI ELEVADORES DO BRASIL., LTDA. – BRAZIL
P.I.C. : MR. S.H. UM
TEL. : +55 11 5070 4141
E-MAIL: sh.um@hdel.com.br

RUSSIA

COMPLEX SERVICE ENGINEERING LLC.
P.I.C. : MR. SERGEY YAKIMENKO
TEL. : +7 499 110 13 35
E-MAIL: info@cs-engr.ru

General Requirement

For quotations,
we require the following information

- 01. Shipyard
- 02. Hull No.
- 03. Flag
- 04. Classification and certification
- 05. Capacity
- 06. Speed
- 07. Traveling height
- 08. Number of stops
- 09. Type of landing door
- 10. Location of machine room

- 11. Dimensions of elevator trunk
- 12. Power supply
- 13. Any other special features which may be required
- 14. Delivery time



Approved for CE Marking
for all areas of elevator,
an industry first in Korea



Accredited with KC
(Korea Certification)
for elevator safety



LABTEST CoC
(UL 1004-1 Edition 2, CSA
C22.2 No 100-14 Ed. 7)



Accredited with
ISO 9001, an industry
first in Korea



Accredited with
ISO 14001, an industry
first in Korea



Accredited with
ISO 45001
Certification



Depending on the time of production of the printed product, there may be fluctuations in the contents and sales product information, and some of the specifications may inevitably change due to quality improvement, so be sure to consult our sales team when purchasing the product.

Notes

1. The images in this printed material are intended to help customers understand, also may differ slightly from the actual product colors.
2. Specifications contained in this printed material are subject to change according to quality improvement and application of options.
3. Copyright © HYUNDAI ELEVATOR CD.,LTD. All rights reserved. Printed in Korea.
4. ♻️ this printed material can be recycled after separate collection for environmental protection.

Website



YouTube

